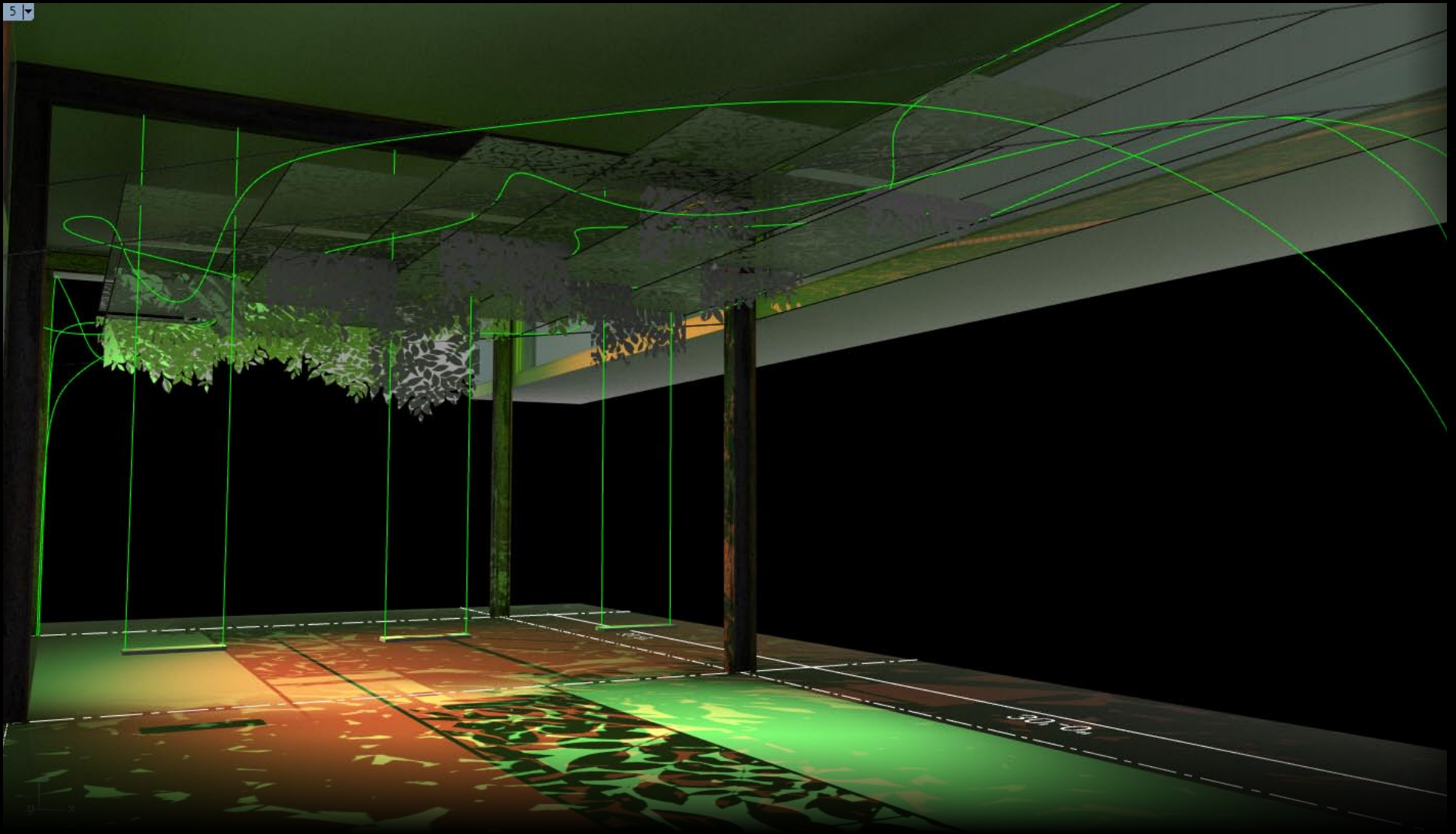




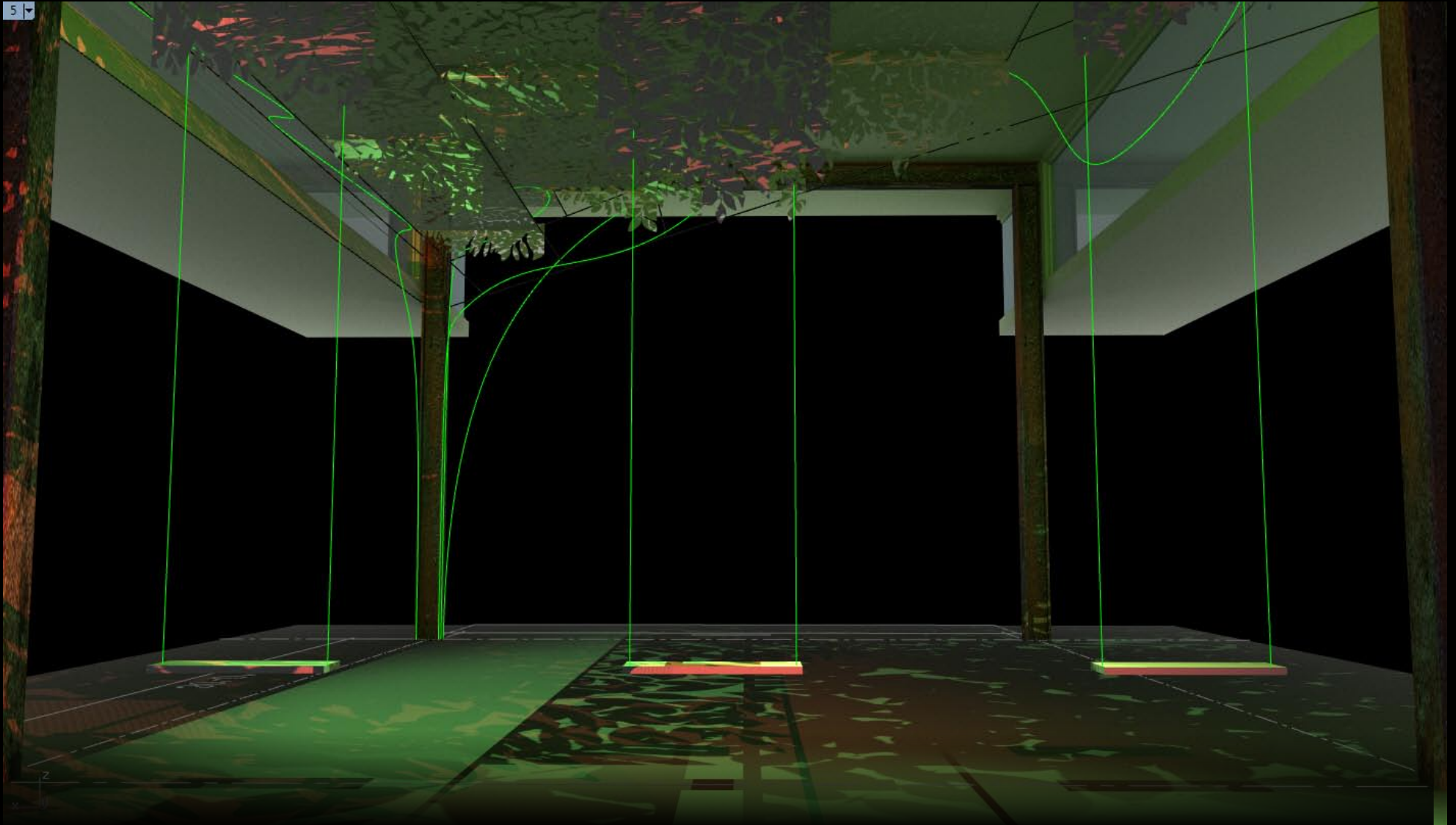
COSTA RICA

SWINGERS CLUB

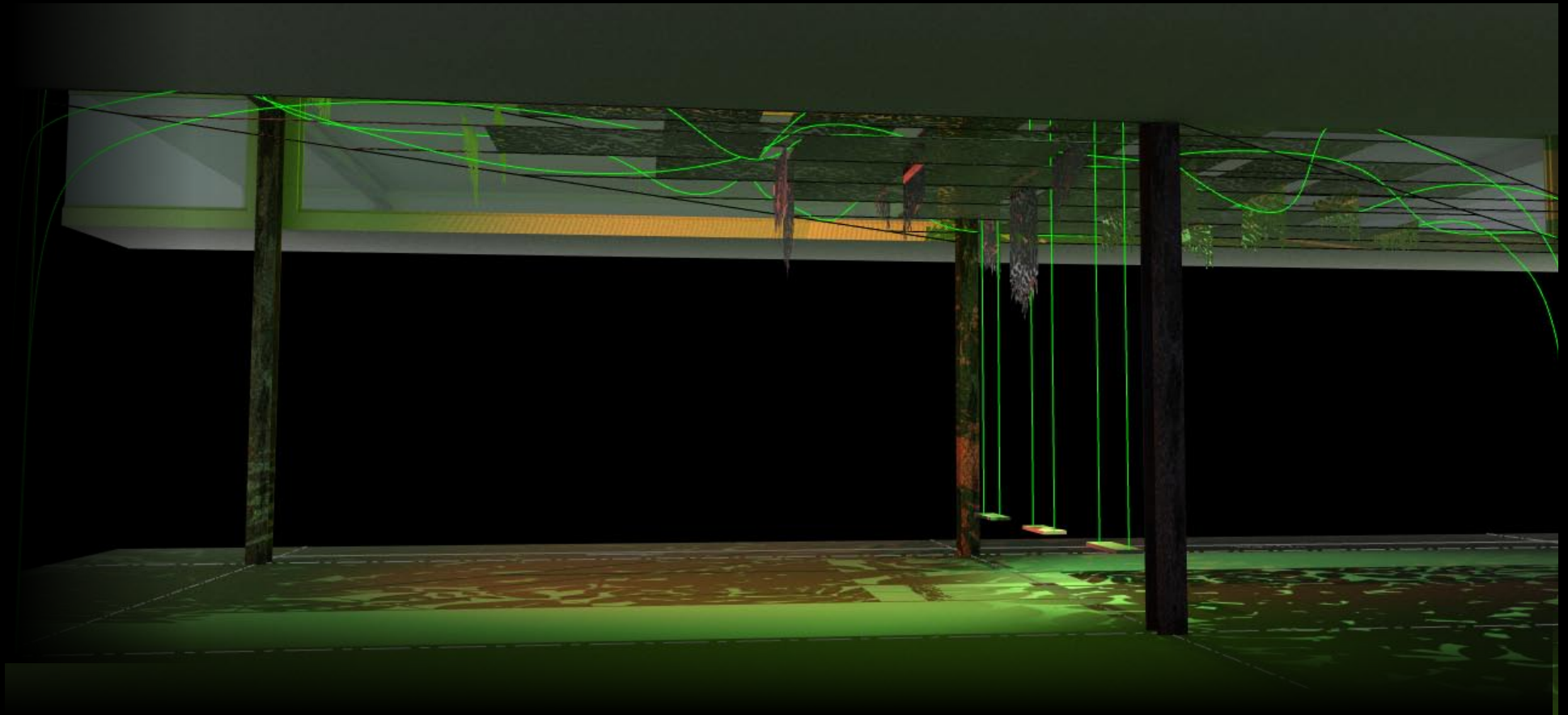
JOHN HEIDA & BRETT CURTIN
INSTALLATION PROPOSAL
UNICORN MEAT



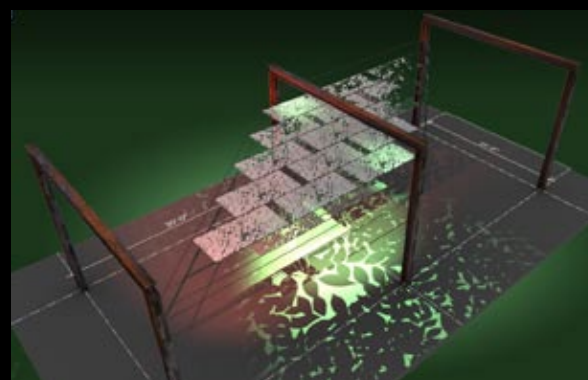
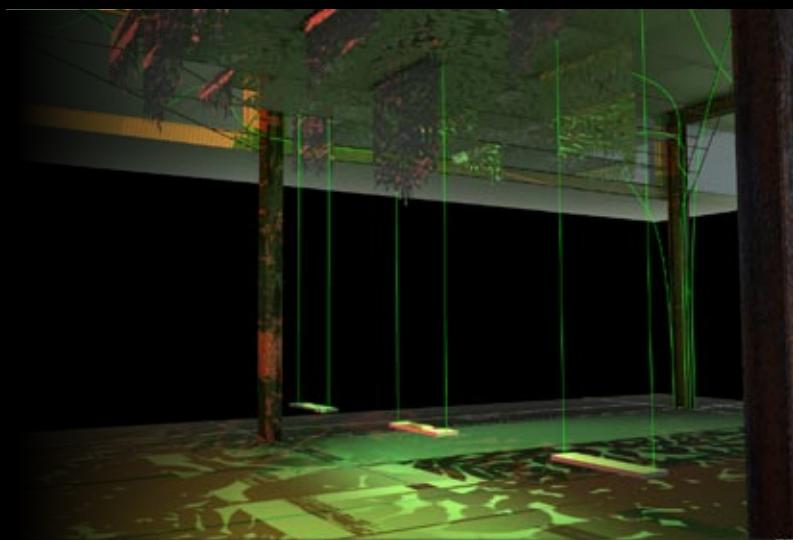
PERSPECTIVE
ILLUMINATED CEILING INSTALLATION
WITH SUSPENDED SWINGS



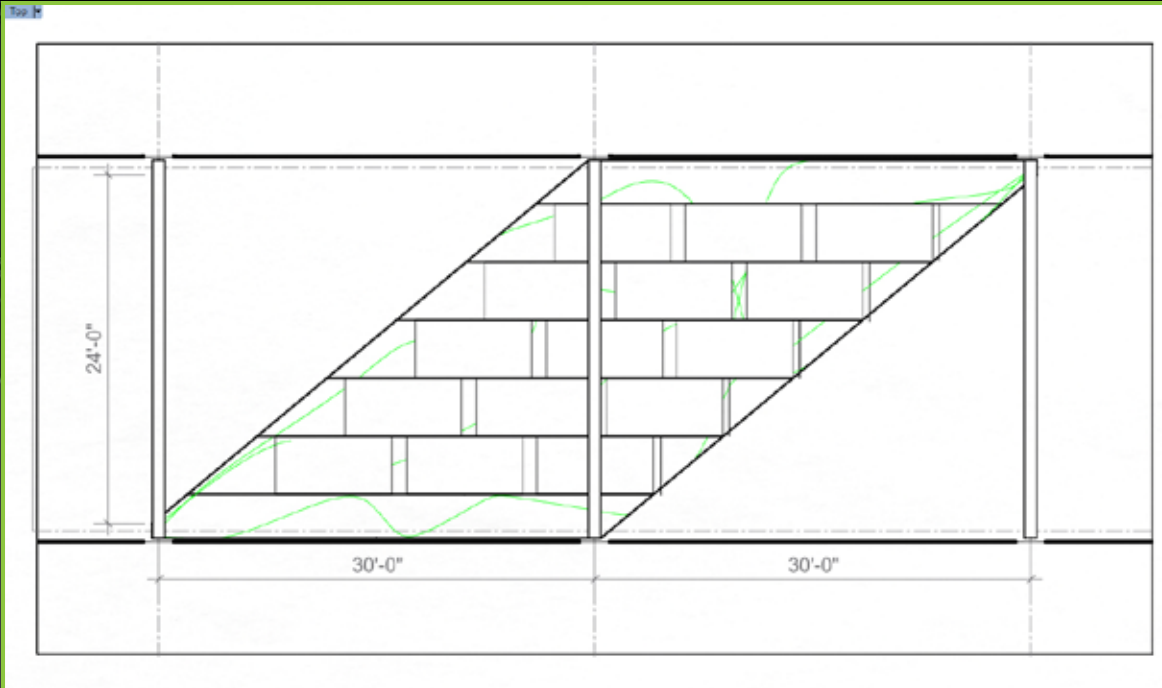
PERSPECTIVE
SWINGS WITH ROPE LIGHT DETAIL



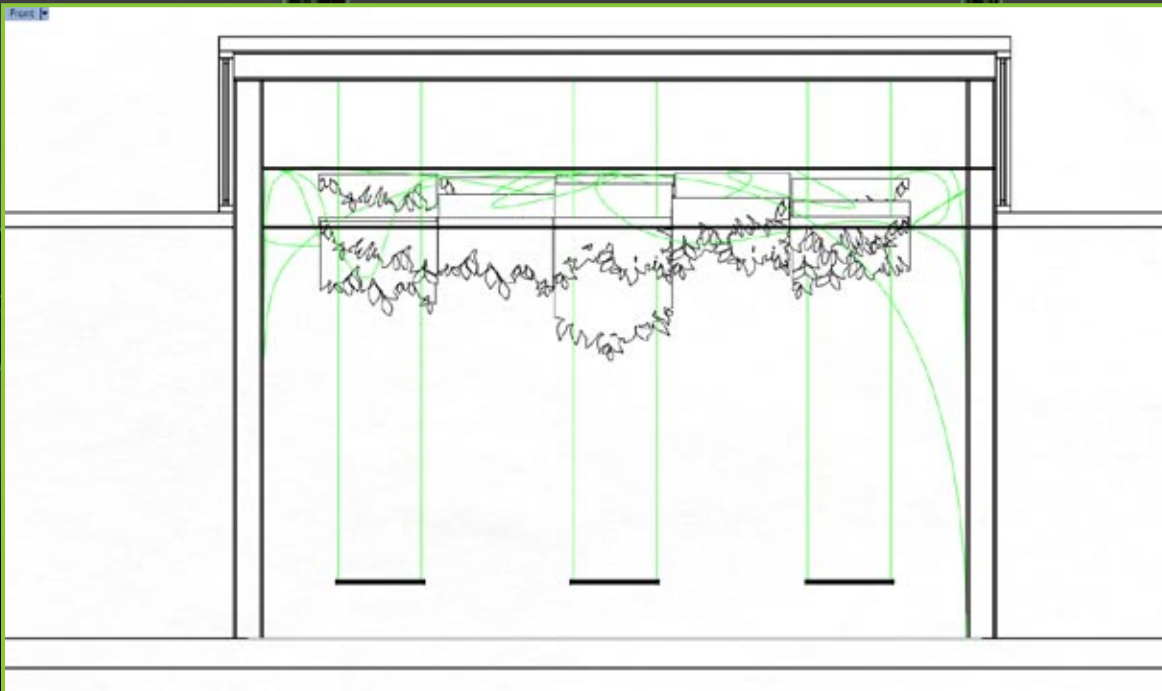
PERSPECTIVE
ILLUMINATED CEILING INSTALLATION
WITH SUSPENDED SWINGS



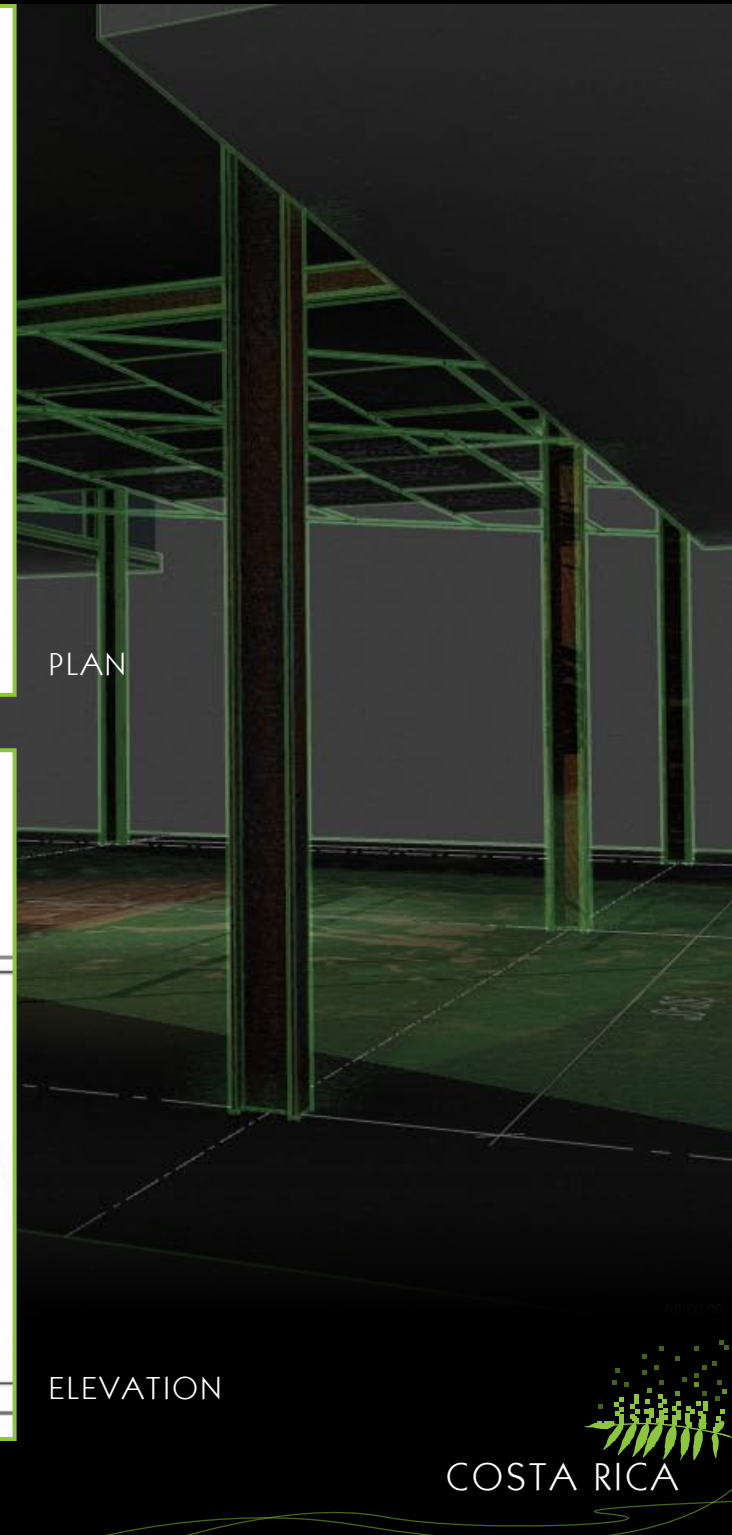
ELEVATED VIEW
CNC ROUTED PANELS WITH MOUNTING
CABLE STRUCTURE



PLAN



ELEVATION



COST SUMMARY

CLOUD FOREST SWINGERS

INSTALLATION PROPOSAL

PLYWOOD	\$---- [2 SHEETS]
CORRUGATED PLASTIC (HTTP://WWW.NGLANTZ.COM)	\$---- [45 SHEETS]
LATTICE WIRE (HTTP://WWW.MCMASTER.COM/#3498T62)	\$---- [800']
WIDE FLANGE CLAMPS (HTTP://WWW.MCMASTER.COM/#5326K19)	\$---- [20 PCS]
ROPE CLIPS (HTTP://WWW.MCMASTER.COM/#30325T14)	\$---- [120 PCS]
TURNBUCKLES (HTTP://WWW.MCMASTER.COM/#3003T142)	\$---- [20 PCS]
ROPE THIMBLES (HTTP://WWW.MCMASTER.COM/#8914T12)	\$---- [30 PCS]
SWING ROPE (HTTP://WWW.MCMASTER.COM/#3852T41)	\$---- [200']
GREEN ROPE LIGHT (HTTP://WWW.AFFORDABLEQUALITYLIGHTING.COM)	\$---- [4 @ 150']
THEATER LIGHTS	PROVIDED BY PROMOTER
PARTS TOTAL	\$----
TAX & SHIPPING [15%]	\$----
LABOR	\$----
CNC MILLING	\$----
TOTAL	\$----

CONTACT

JOHN THOMAS HEIDA
917.971.1015
jtheida@gmail.com

BRETT CURTIN
917.836.0016
brett@baceworks.com